

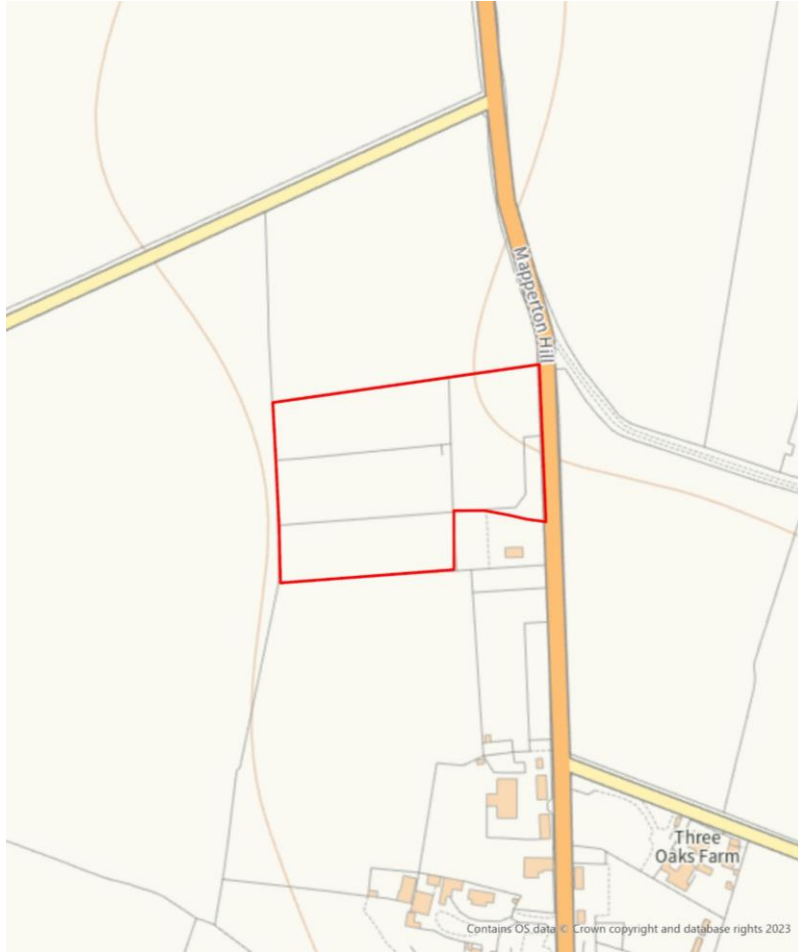
Strategic Planning Committee

10th July 2024

7) PL/2022/08186 - The Stables, Mapperton Hill, Mere, BA12 6LH

Extension to existing Gypsy and Traveller site with 10 additional pitches, each pitch to consist of 1 Mobile Home, 1 Touring caravan and parking

Recommendation: Approval with conditions

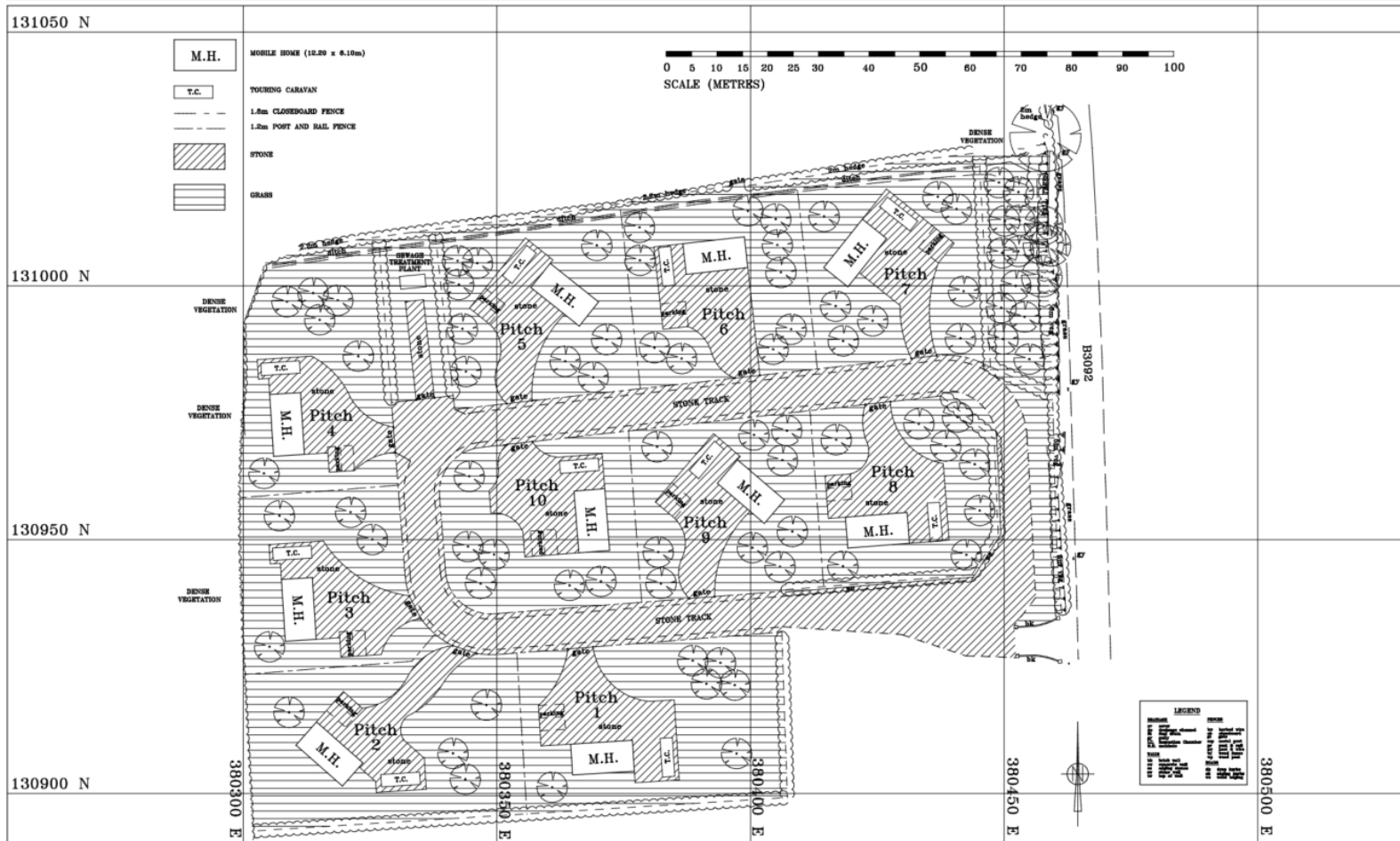


Site Location Plan



Aerial Photography

Proposed Site Layout



Site highlighted in yellow with Rights of Way in Wiltshire and National Landscape boundary to the north.

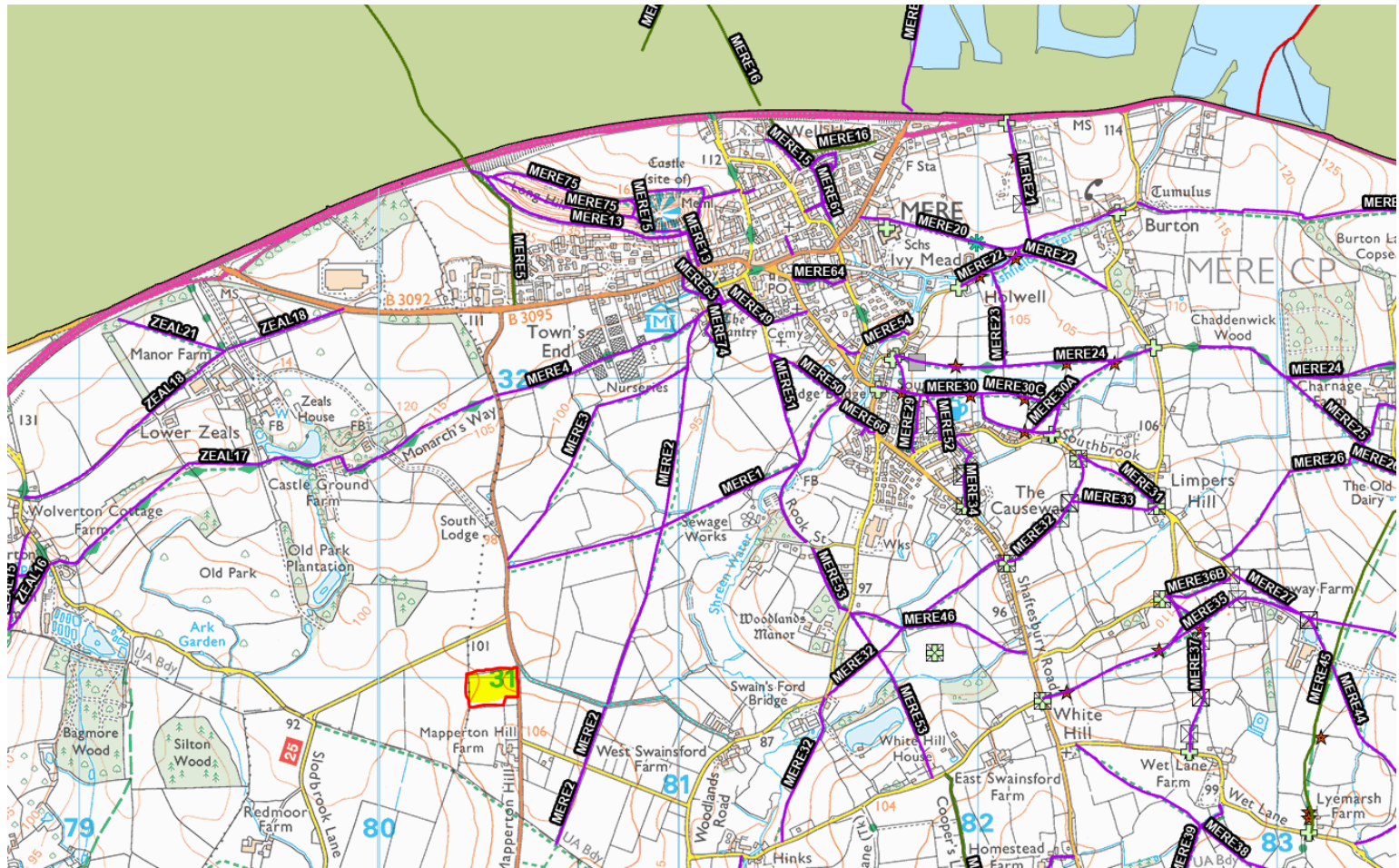


Photo from site access looking south towards Gillingham



Photo from site entrance looking north towards Mere



Photo of site from existing access



View of site from highway immediately adjacent to the site



Photo showing previous access now closed in accordance with condition on planning permission no. 14/10556/FUL



View of site looking north along B3092 towards Mere. Approx.
Site entrance is marked with the arrow



Similar view closer to the application site with the existing mobile home on the adjoining site marked by the arrow



View of site immediately adjacent to the access



Site when viewed from the north, coming from Mere.
Mapperton Hill Farm marked with the arrow



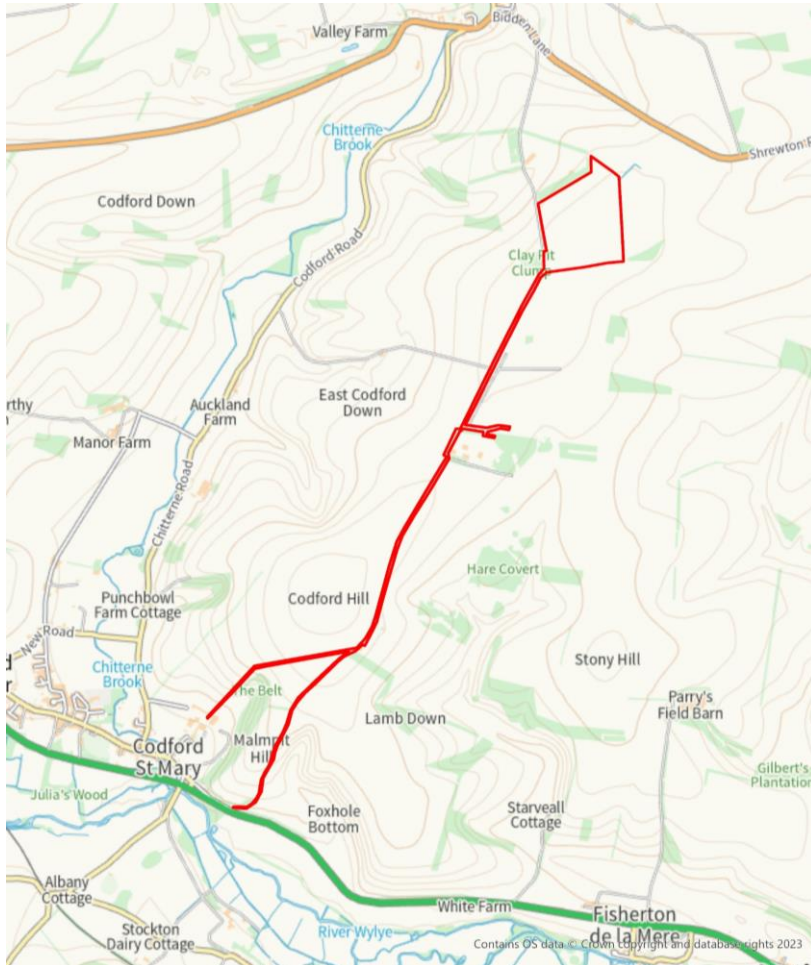
Existing mobile home marked with arrow and the application site is the land to the west, the boundary of which is shown by the hedge line to the west.



7) PL/2023/03024 - East Farm, Codford St Mary, Wiltshire , BA12 0LN

Installation of a solar photovoltaic scheme together with landscaping and associated infrastructure

Recommendation: Approval with conditions



Site Location Plan



Aerial Photography

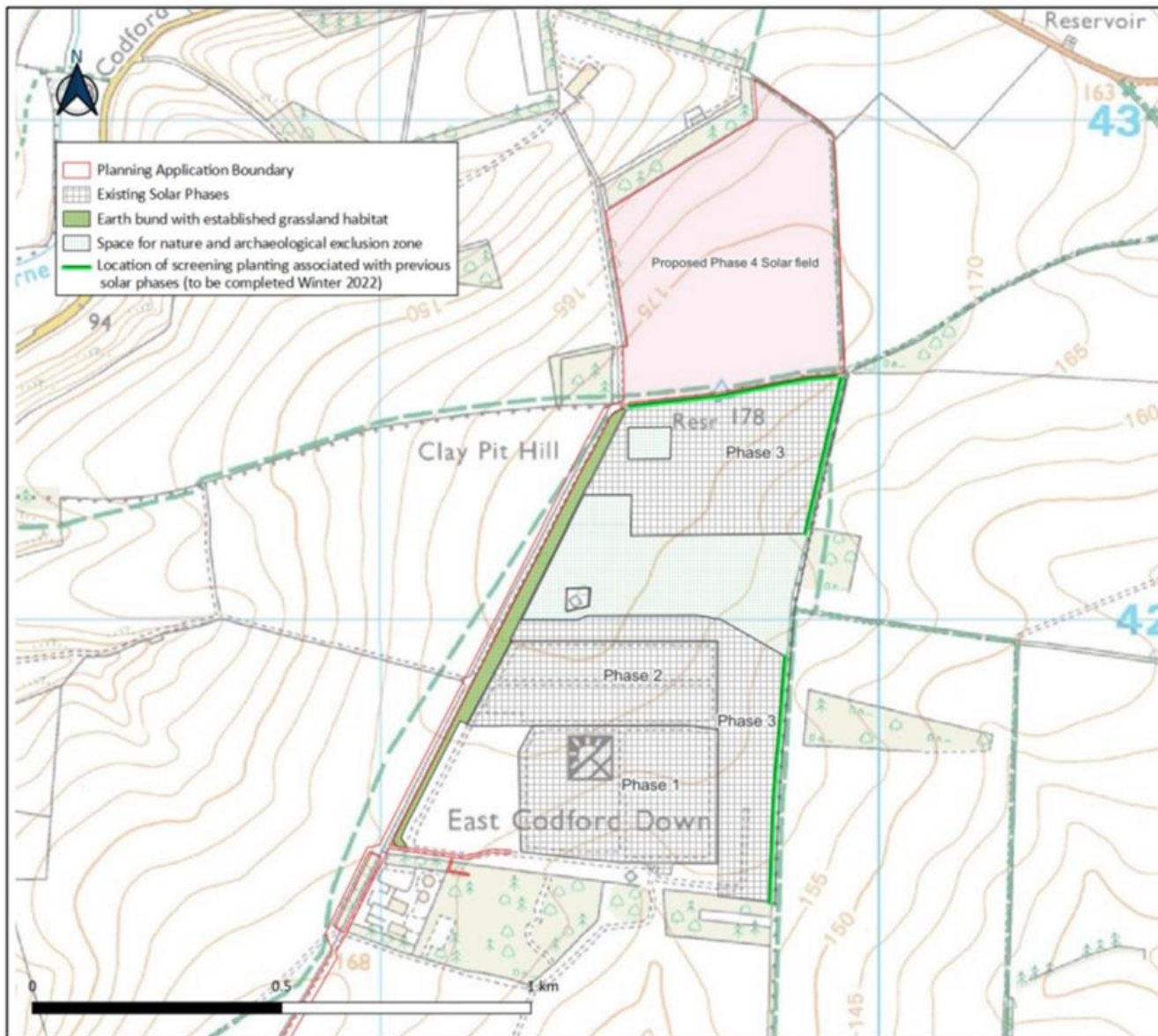
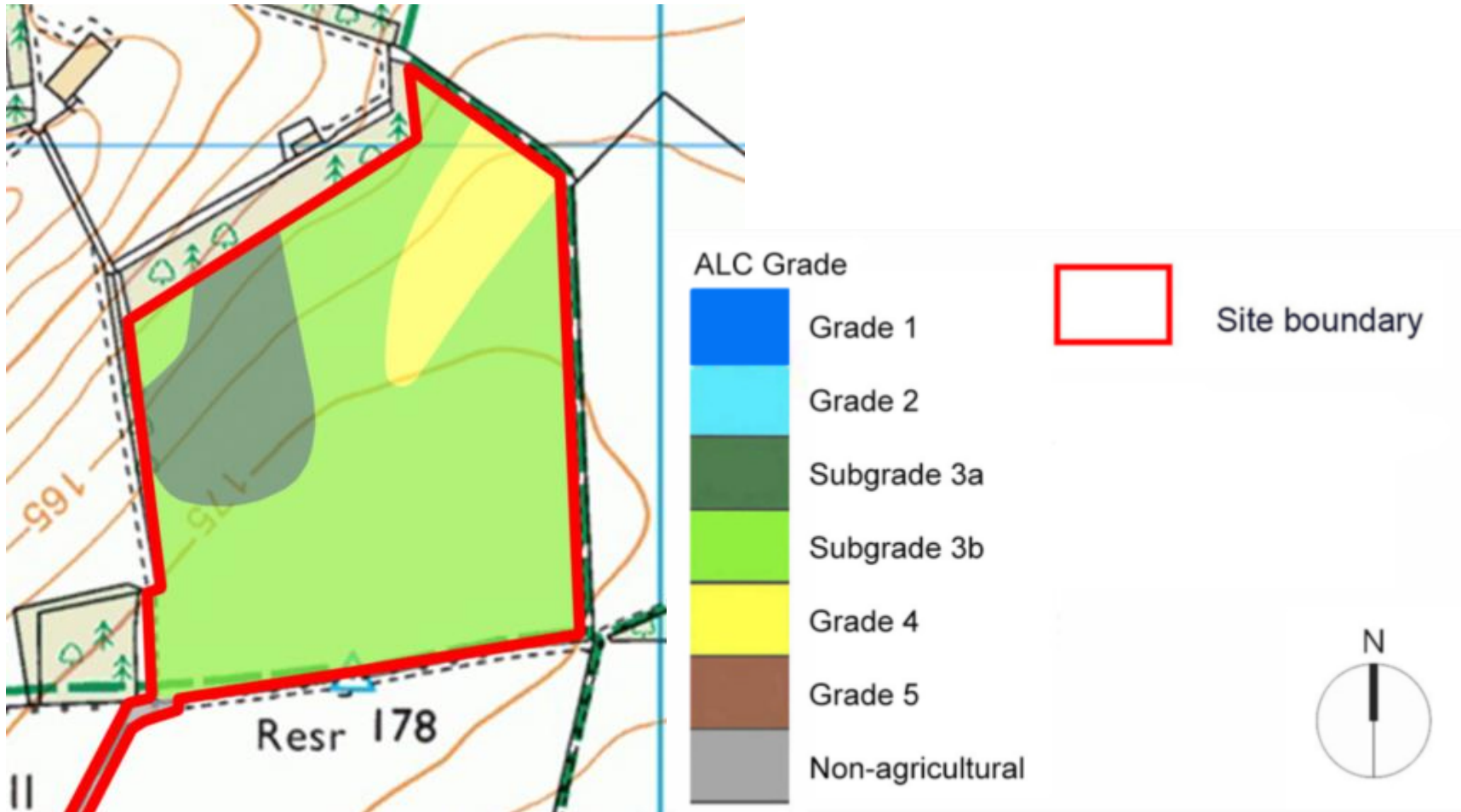


Figure 2.2 Proposed Development and Surrounds

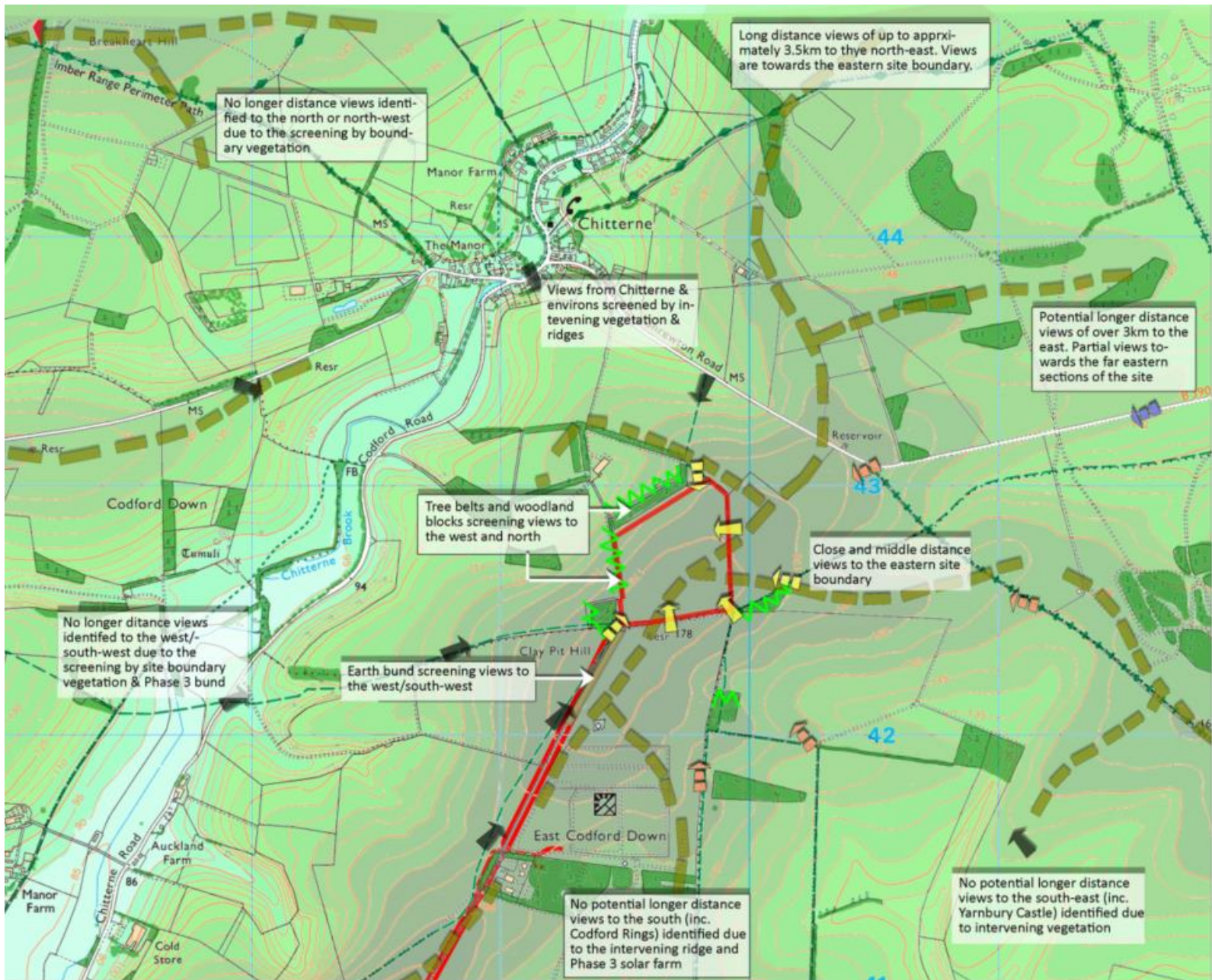
Application site in relation to solar phases 1-3, glasshouses and Anaerobic Digester



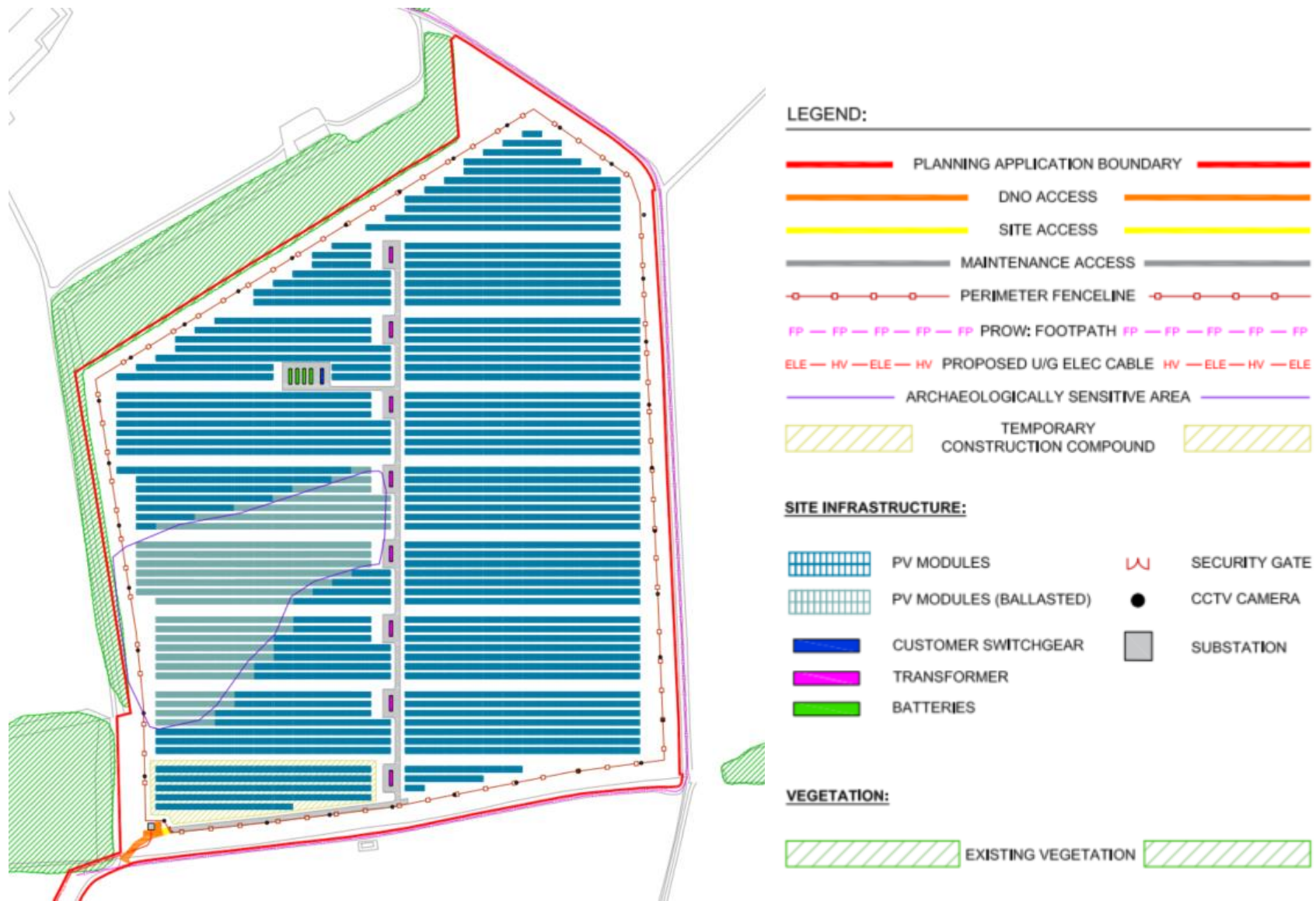
Agricultural Land Classification



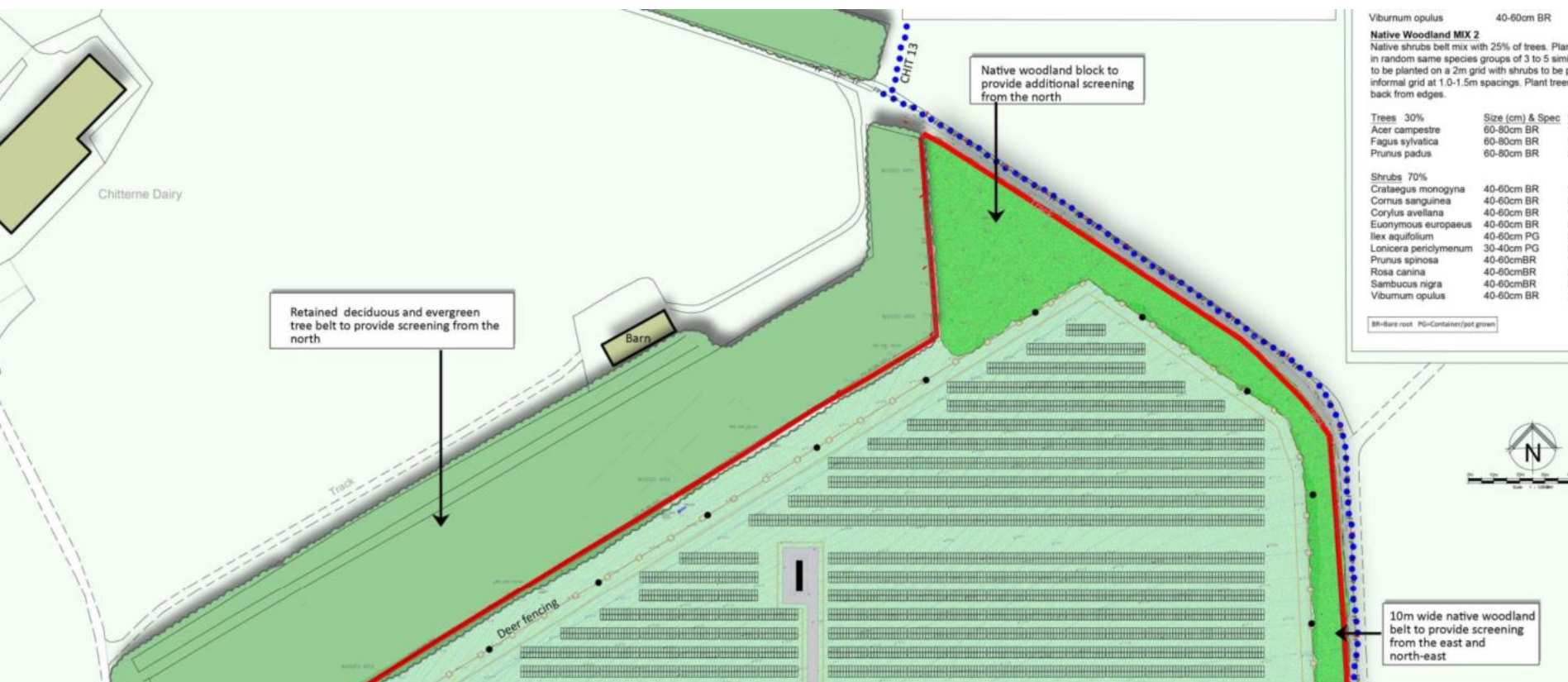
Map of application site in relation to public rights of way and the National Landscape Designation (dark green)¹⁹



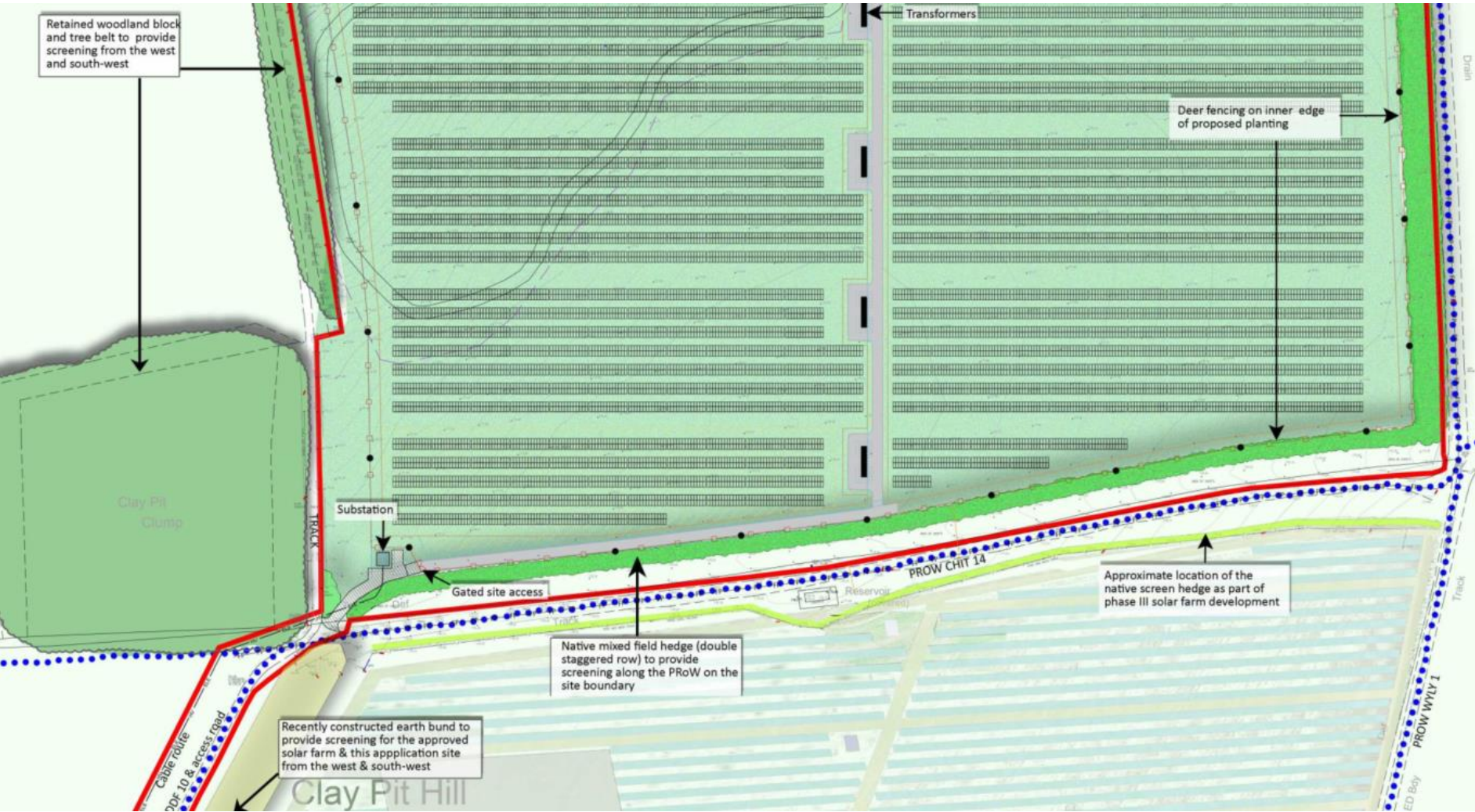
Landscape Visual Impact Assessment



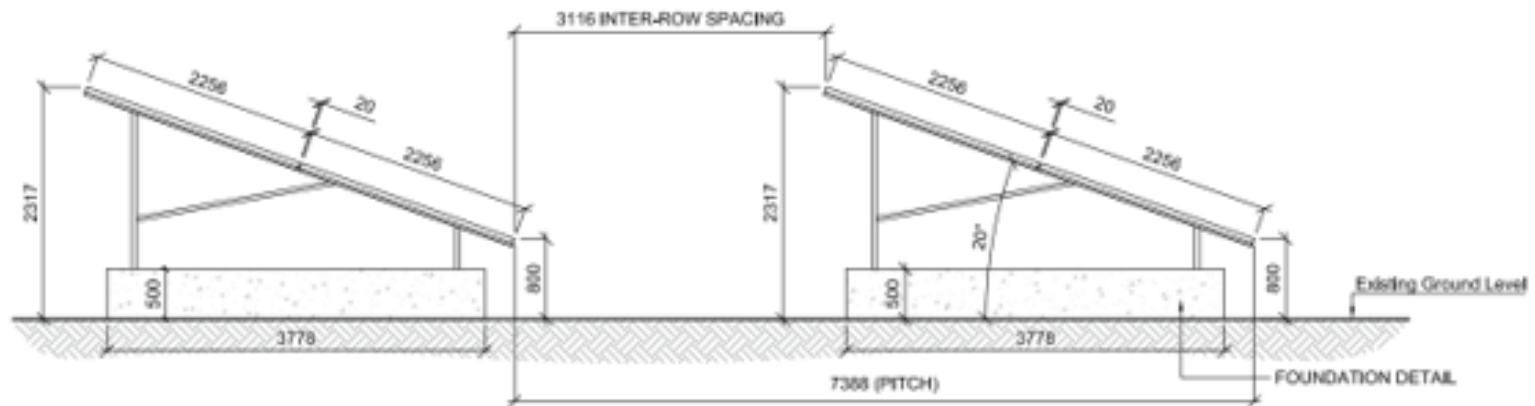
Proposed Site Layout Plan



Extract from Proposed Landscaping Plan



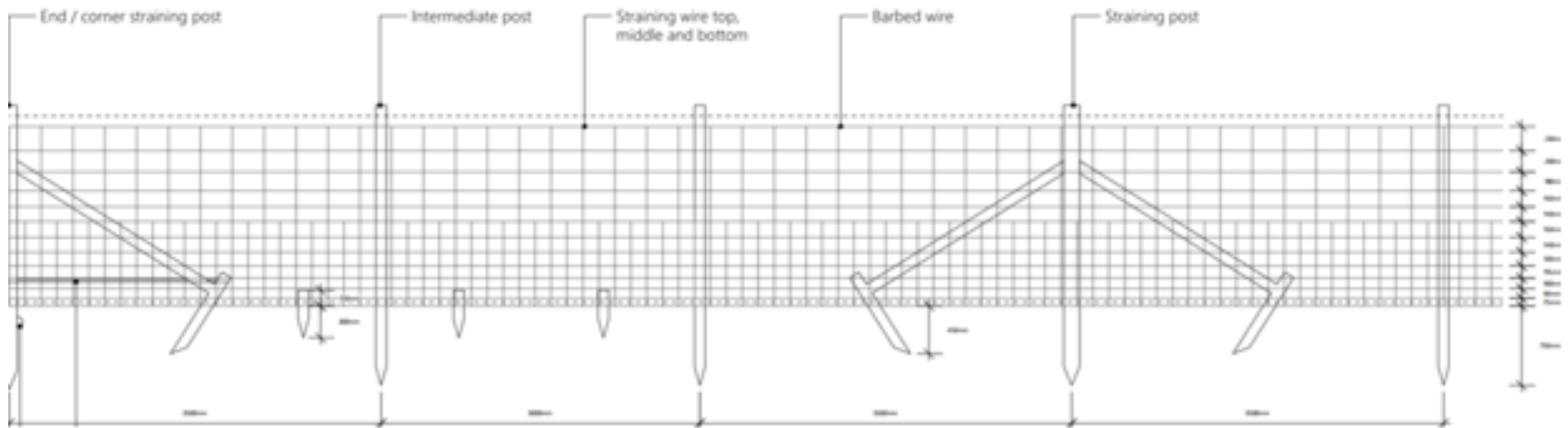
Extract from Proposed Landscaping Plan



CROSS SECTION

Cross Section of Proposed Panels

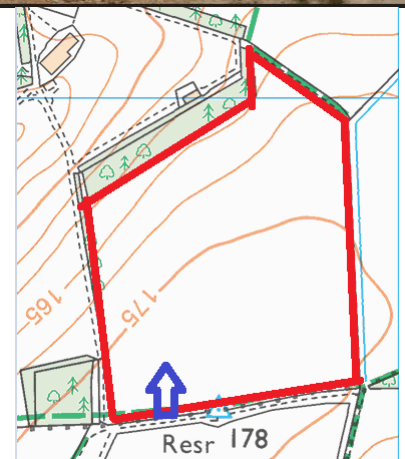
Deer Fence - 1.9m high
1.40 @ A3



Deer Fence detail



View from South West corner of application site on CHIT14 looking north along western boundary of the site



Panorama view from CHIT14 of application site



View from CHIT13/14 in south eastern corner of the application site looking west along CHIT14 with solar phase 3 on the left



View from CHIT13 in the south eastern corner of the application site looking north west towards northern boundary



View from and of CHIT13 in south eastern corner of the application site looking north along eastern boundary



View from WYLY1 looking south with Phase 3 to the right with the anaerobic facility in the woodland behind



Panorama view from CHIT13/14 in south eastern corner of the site looking at phase 3 (left) and application site (right)



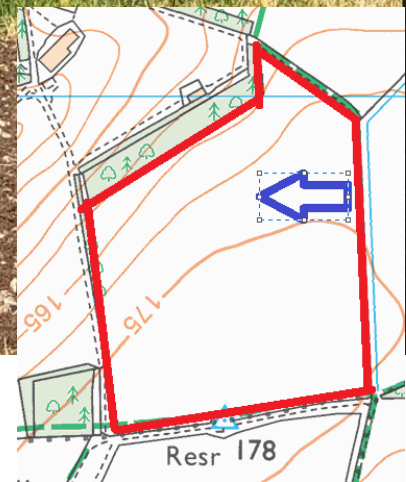
View From CHIT13 looking north towards B390 with Chitterne (out of view) to the left and in valley



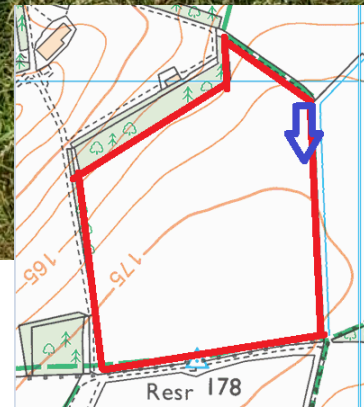
View from CHIT13 looking at northern boundary of the site – this is where the new woodland planting would be located to link with existing woodland in the foreground



View from CHIT13 at northern end of site looking towards All Saints and St Mary's Church and Manor Farm – approximately 1.1km away



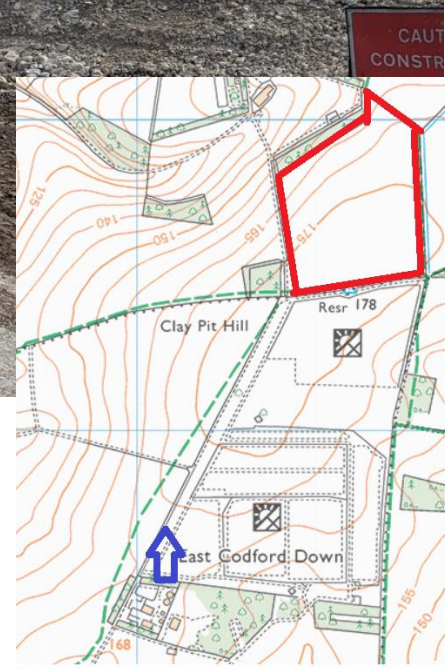
View from CHIT13 at eastern boundary of application site looking west.



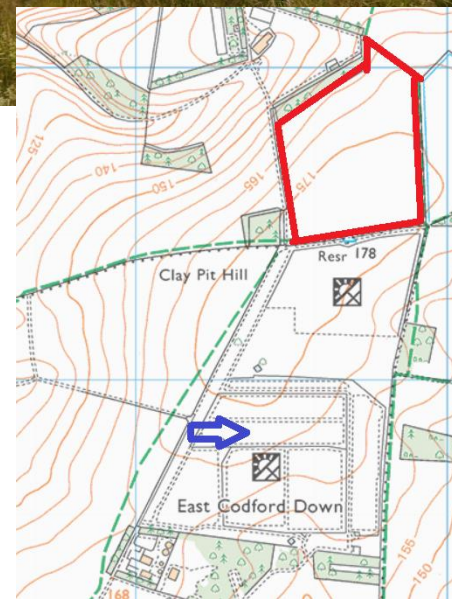
View from CHIT13 north eastern boundary looking south
(application site on right)



Google Street view image from (blue arrow) on the
B390



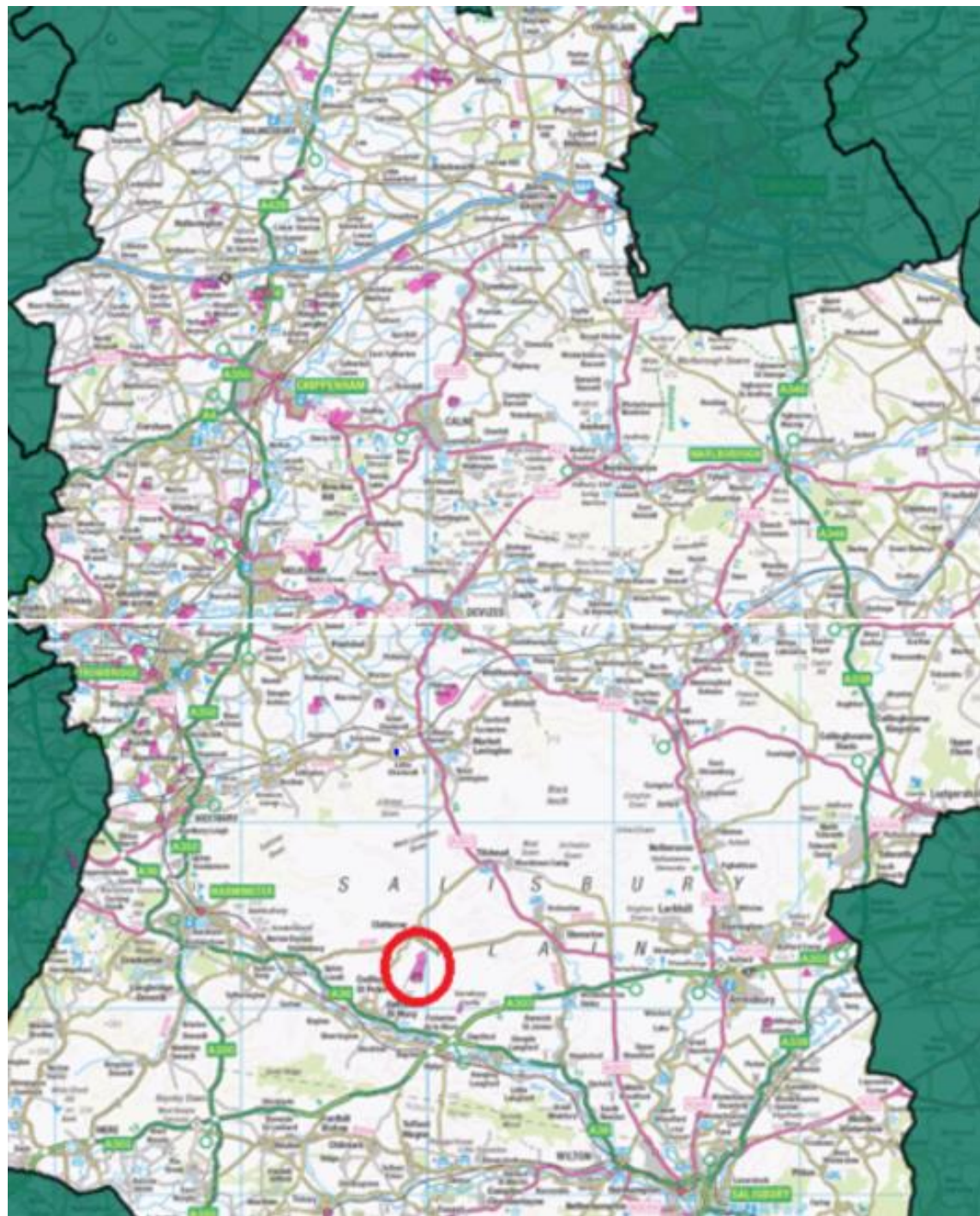
The bund under construction in August 2023



Panorama view from top of bund looking at application site (far left), phase 1 (front) and glasshouses (right)



Example of 'whips' landscaping on Phase 3 – photo dated August 2023



Strategic Planning Committee

10th July 2024